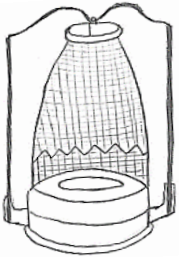


Center Draft Kerosene Mantle Lamp—Exploded Parts Diagram

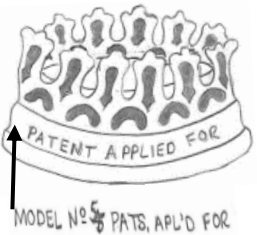


Kone Kap Mantle

-Contains burner cone

Fits Galleries: 3-11

Replacement: N146 No longer available; use **R150** mantle with adapter **N146A**

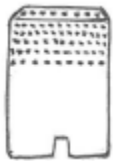


Heel-less Gallery

-Early: like 3/4 unmarked or with 5 stamped over the 4 on some (see alternate illustration); Late: like 6

Fits Burners: 3-6

Replacement: No longer available

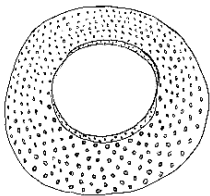


Thimble Generator (Flame Spreader)

-New frusto-conical design (tapered top); with baffle 1 1/16" H x 7/8" OD

Fits Burners: 5-6

Replacement: No longer available

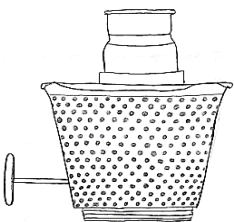


Air Distributor

-Early: 2-piece, Late: 1-piece

Fits Burners: 5-6

Replacement: No longer available

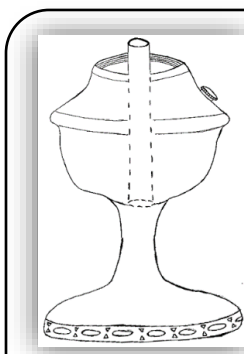


Burner Basket

-With outer wick tube; Early: slotted like 3/4, Late: mesh like 6 (illustrated) 1 25/32" coarse threads

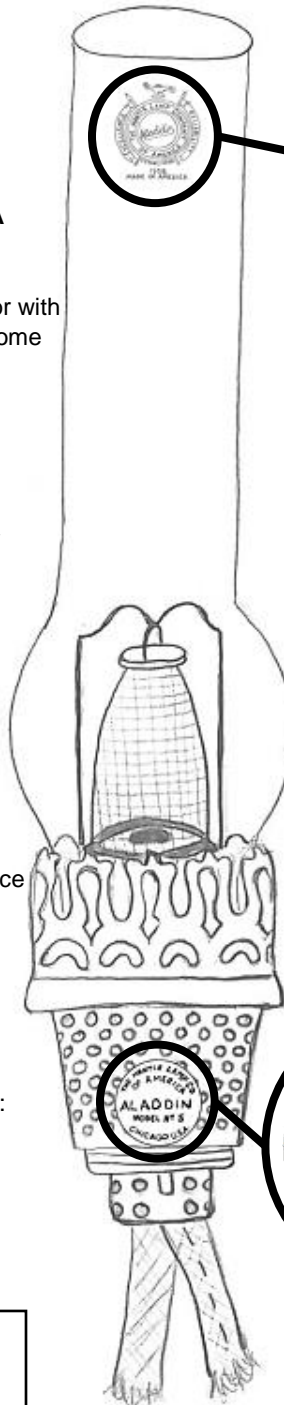
Fits Lamps: 3-6

Replacement: No longer available



Center Draft Lamp Font

Air enters the lamp via holes in the lamp foot and then travels up the inner tube that extends through the font bowl to become part of the burner.



Heel-less Ball-Style Chimney

-Crest logo

12 1/2" H x 2" top OD x 2 5/8" bottom OD

Fits Galleries: 1-11

Replacement: No longer available; use Standard 12.5" **100004908** or High Output 15.5" **100006743**
Note: base diameter may be slightly larger than original - if gallery tabs can't be widened, the fit may be too tight or may not fit at all



1" Tubular Wick

-Unreinforced; Aladdin name stamped in red 7/8" ID x 1 1/8" OD, 6-6 1/2" L

Fits Burners: 1-8

Replacement: No longer available; use wick **N198** and remove the paper and tabs

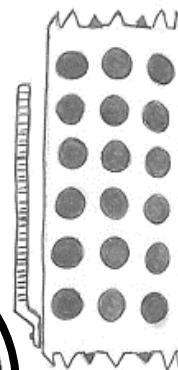
Wick carrier teeth holds wick in place

Wick Carrier/ Raiser

-Also found with 3/4 and 6 carriers; mounts into burner bottom 2 1/8" L x 1 3/16" OD, 2" L gear arm w/ fine teeth on right

Fits Burners: 3-6

Replacement: No longer available



1" Wick Cleaner (Trimmer)

Fits Wicks: Works for all 1" Aladdin

Replacement: R111

Crownplace Brands

13110 Emerson Rd
Apple Creek, OH 44606
Phone: (888) 332-5534

Fax: (815) 572-8518

Website: www.aladdinlamps.com

Email: info@crownplacebrands.com



Simply Brilliant™

"Light where you want it -
When you want it -
Without the need for electricity."

That's the magic of Aladdin!