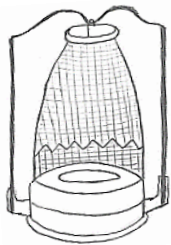


### Center Draft Kerosene Mantle Lamp—Exploded Parts Diagram

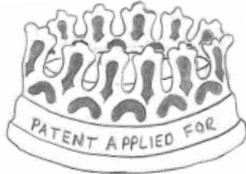


#### Kone Kap Mantle

-Contains burner cone

**Fits Galleries:** 3-11

**Replacement:** N146 No longer available; use **R150** mantle with adapter **N146A**



#### Heel-less Gallery

**Fits Burners:** 3-6

**Replacement:** No longer available



#### Thimble Generator (Flame Spreader)

-Only originals have baffle and no cut-out on bottom

- 1 – original, early
  - 2 – original, late
  - 3 – replacement 1920s?
  - 4 – replacement 1928-1954?
- 1 1/16" H x 7/8" OD

**Fits Burners:** 5-6

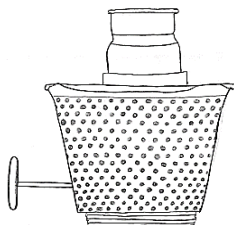
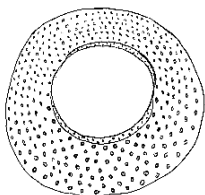
**Replacement:** No longer available



#### Air Distributor

**Fits Burners:** 5 (late) and 6

**Replacement:** No longer available

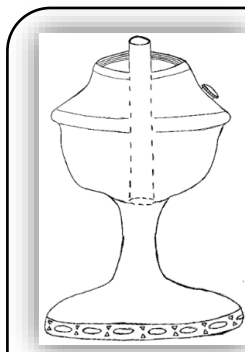


#### Burner Basket

-With outer wick tube  
1 25/32" coarse threads

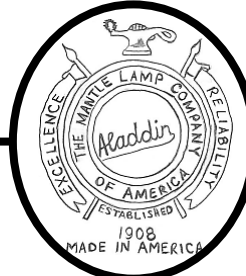
**Fits Lamps:** 3-6

**Replacement:** No longer available



#### Center Draft Lamp Font

Air enters the lamp via holes in the lamp foot and then travels up the inner tube that extends through the font bowl to become part of the burner.



#### Heel-less Ball-Style Chimney

-Crest logo

12 1/2" H x 2" top OD x 2 5/8" bottom OD

**Fits Galleries:** 1-11

**Replacement:** No longer available; use Standard 12.5" **100004908** or High Output 15.5" **100006743**

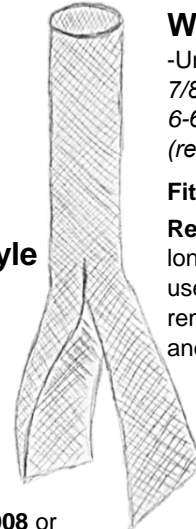
*Note: base diameter may be slightly larger than original - if gallery tabs can't be widened, the fit may be too tight or may not fit at all*



1914 and 1917



1915-1916



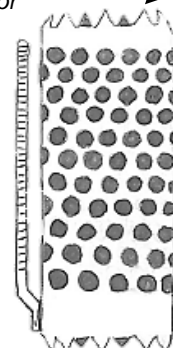
#### 1" Tubular Wick

#### Wick

-Unreinforced;  
7/8" ID x 1 1/8" OD,  
6-6 1/2" L  
(reinforced 7 3/4" L)

**Fits Burners:** 1-8

**Replacement:** No longer available; use wick **N198** and remove the paper and tabs



Wick carrier teeth holds wick in place

#### Wick Carrier/Raiser

-Mounts into burner bottom  
2 1/8" L x 1 3/16" OD,  
2" gear w/ fine teeth on right

**Fits Burners:** 3-6

**Replacement:** No longer available



#### 1" Wick Cleaner (Trimmer)

**Fits Wicks:** Works for all 1" Aladdin

**Replacement:** R111



#### Crownplace Brands

13110 Emerson Rd  
Apple Creek, OH 44606  
**Phone:** (888) 332-5534  
**Fax:** (815) 572-8518  
**Website:** www.aladdinlamps.com  
**Email:** info@crownplacebrands.com



#### Simply Brilliant™

"Light where you want it –  
When you want it –  
Without the need for electricity."

That's the magic of Aladdin!