

## 1. Remove Old Wick

- a. Twist and remove the gallery
- b. Twist and remove the outer wick tube
- c. Using the wick raiser knob, turn the wick up until the gear disengages from the wick raiser
- d. Pull old wick and wick raiser carefully out of burner from top
- e. Press the wick top in slightly to disengage the bumps from the holes in the wick raiser, then remove from wick
- f. Replace flame spreader in inner wick tube, if removed

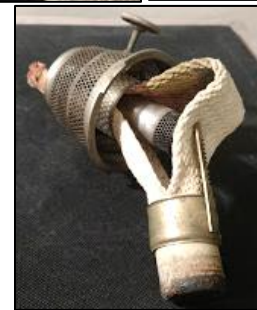
## 2. Attach Wick Raiser to New Wick

- a. Slide the round wick raiser over the top of the new wick; the gear arm should be pointing toward the bottom of the wick
  - b. Align the raised buttons on either side with the lower set of holes in the wick raiser to lock the wick raiser in place
- Note: upper holes are for resetting the wick, when more burning surface is needed as the wick is used*



## 3. Insert Wick Tails Into the Wick Channels of the Burner on Either Side of the Inner Wick Tube

- a. Grab the burner by placing index and middle fingers around the wick raiser knob, and use fingers to pull knob out
  - b. Holding the burner upright, insert the end of one wick tail into one of the wick channel slots located on either side of the inner wick tube; pay special attention that the wick raiser is on the same side as the wick raiser knob
  - c. Slide the wick tail by pressing against the inner wick tube until it can be pulled through from the bottom
- Tip: a long, slender tool such as a letter opener can help poke and guide the wick to the bottom to reach the slots*
- Tip: sliding an index card next to the wick can help keep the wick from getting caught on the winder gear*
- d. Repeat b and c for the second wick tail
  - e. Pull wick tails down from the bottom until the round part of the wick is resting around the inner wick tube
- Tip: Tweezers are extremely helpful to help grab the paper tabs or the wick itself (if the tabs are missing) to pull the wick through the slots*



## 4. Engage the Wick Raiser Knob Gear with the Wick Raiser

- a. Look down into the burner and see that the wick raiser is in line with the wick raiser knob post
- b. Turn the burner over and take one tail in each hand, with thumbs in between, and then press thumbs against the burner, pulling on wicks at the same time; or you can try just pulling the wick down firmly with one hand from the bottom while holding the burner with the other hand
- c. When you hear a “pop”, the wick raiser should be engaged with the wick raiser knob
- d. Turn the wick raiser knob to check to see if the wick moves easily up and down
- e. If wick doesn’t move, or knob doesn’t turn, pull wick back up a little and re-align it and try again



## 5. Prep for Lighting

- a. Remove paper tabs from bottom of wick (if present)
- b. Replace outer wick tube and gallery
- c. Soak new wick for 1 hour before lighting