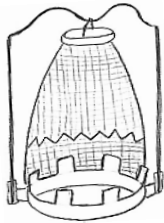


## Center Draft Kerosene Mantle Lamp—Exploded Parts Diagram



### Cap Mantle

**Fits Galleries:** 1-2  
**Replacement:** No longer available



### Heel-less Gallery

-Early have holes in top of cone/late have no holes; very late transition lamps may have 3 gallery

**Fits Burners:** 1-2  
**Replacement:** No longer available

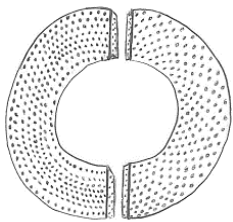
*Note: Late galleries do not have patent marking*



### Thimble Generator (Flame Spreader)

-Very late lamps may have a 3 generator with 3 gallery  
1 1/8" H x 7/8" OD

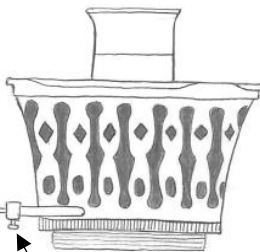
**Fits Burners:** 2  
**Replacement:** No longer available; 3 generator with 3 gallery may work



### Air Distributor

-Early: 1-piece, Late: 2-piece

**Fits Burners:** 2  
**Replacement:** No longer available

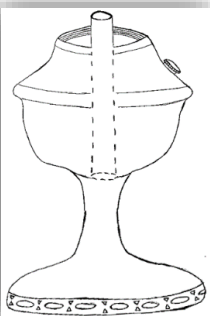


### Burner Basket

-With outer wick tube  
1 25/32" fine threads

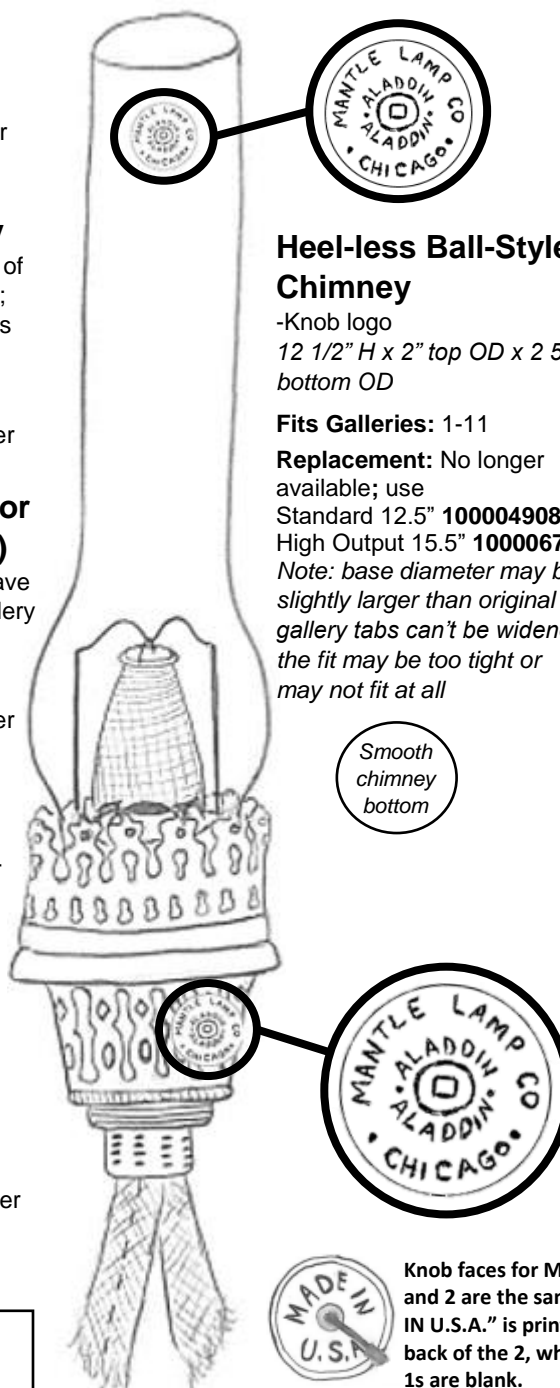
**Fits Lamps:** 1-2  
**Replacement:** No longer available

*Thumb screw only on early burners*



### Center Draft Lamp Font

Air enters the lamp via holes in the lamp foot and then travels up the inner tube that extends through the font bowl to become part of the burner.



### Heel-less Ball-Style Chimney

-Knob logo  
12 1/2" H x 2" top OD x 2 5/8" bottom OD

**Fits Galleries:** 1-11  
**Replacement:** No longer available; use Standard 12.5" 100004908 or High Output 15.5" 100006743  
*Note: base diameter may be slightly larger than original - if gallery tabs can't be widened, the fit may be too tight or may not fit at all*

Smooth chimney bottom

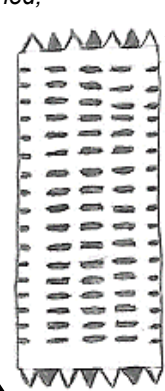


Knob faces for Models 1 and 2 are the same. "MADE IN U.S.A." is printed on the back of the 2, while most 1s are blank.



### 1" Tubular Wick

-Unreinforced; Aladdin name stamped in red  
7/8" ID x 1 1/8" OD, 6-6 1/2" L  
**Fits Burners:** 1-8  
**Replacement:** No longer available; use wick N198 and remove the paper and tabs



Wick carrier teeth holds wick in place

### Wick Carrier/Raiser

-Mounts into burner bottom  
2 5/8" L x 1 3/16" OD  
**Fits Burners:** 1-2  
**Replacement:** No longer available

### 1" Wick Cleaner (Trimmer)

-Did not originally come with a cleaner  
**Replacement:** R111 works for all 1" Aladdin Wicks

### Crownplace Brands

13110 Emerson Rd  
Apple Creek, OH 44606  
Phone: (888) 332-5534  
Fax: (815) 572-8518

Website: [www.aladdinlamps.com](http://www.aladdinlamps.com)  
Email: [info@crownplacebrands.com](mailto:info@crownplacebrands.com)



### Simply Brilliant™

"Light where you want it –  
When you want it –  
Without the need for electricity."

That's the magic of Aladdin!