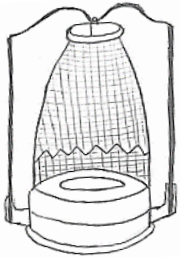


## Center Draft Kerosene Mantle Lamp—Exploded Parts Diagram

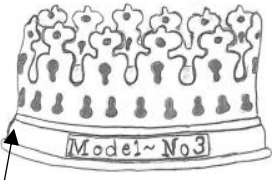


### Kone Kap Mantle

-Contains burner cone

**Fits Galleries:** 3-11

**Replacement:** N146 No longer available; use **R150** mantle with adapter **N146A**



### Heel-less Gallery

**Fits Burners:** 3-6 (may also be found on some late 2s)

**Replacement:** No longer available

MODEL No. 3 PAT. U.S.A. MAR. 14, '11, APR. 4, '11  
CANADA JAN. 10, '11, BELGIUM SEPT. 1, '11  
FRANCE OCT. 28, '10 OTHER PATS. PENDING

*Single line on early galleries; late as shown in illustration*

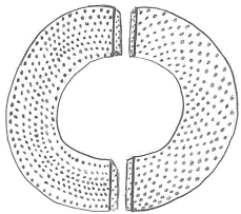


### Slotted Generator (Flame Spreader)

1 5/6" H x 7/8" OD

**Fits Burners:** 3; may fit 2 with a 3 gallery

**Replacement:** No longer available

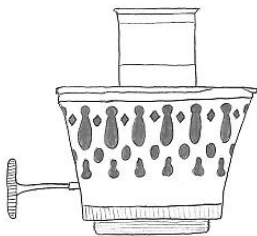


### Air Distributor

-Two-piece

**Fits Burners:** 3-5

**Replacement:** No longer available

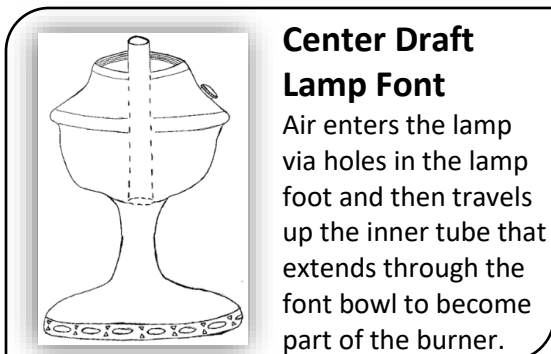


### Burner Basket

-With outer wick tube  
1 25/32" coarse threads

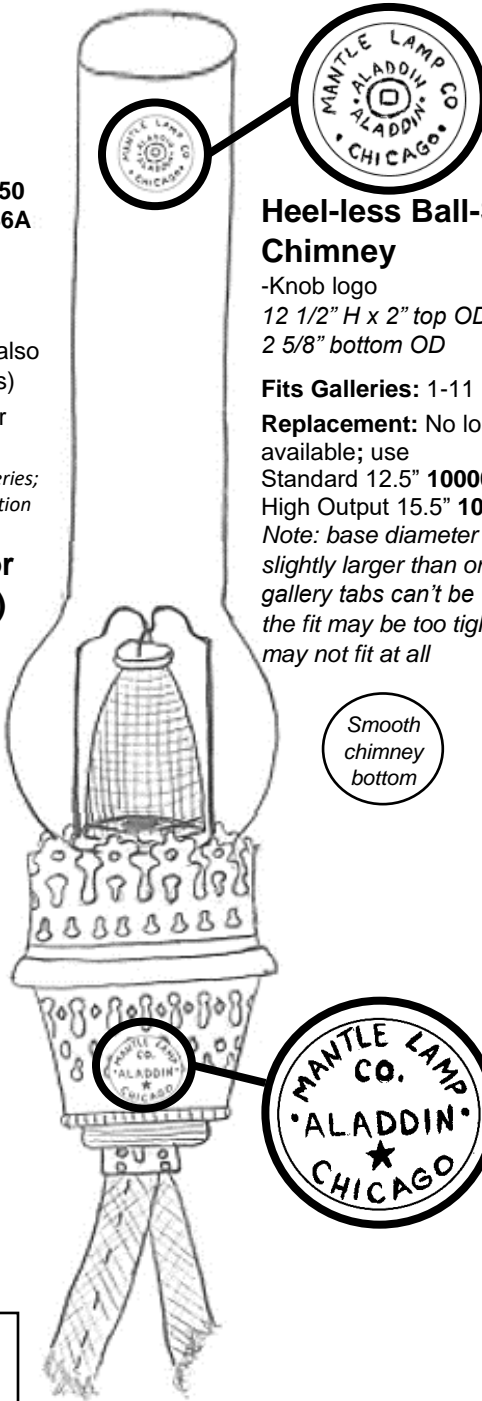
**Fits Lamps:** 3-6

**Replacement:** No longer available



### Center Draft Lamp Font

Air enters the lamp via holes in the lamp foot and then travels up the inner tube that extends through the font bowl to become part of the burner.



### Heel-less Ball-Style Chimney

-Knob logo  
12 1/2" H x 2" top OD x 2 5/8" bottom OD

**Fits Galleries:** 1-11

**Replacement:** No longer available; use Standard 12.5" **100004908** or High Output 15.5" **100006743**  
*Note: base diameter may be slightly larger than original - if gallery tabs can't be widened, the fit may be too tight or may not fit at all*

Smooth chimney bottom

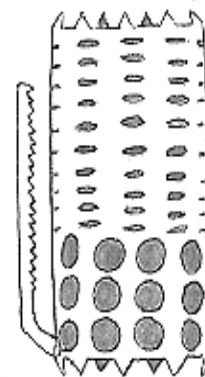


### 1" Tubular Wick

-Unreinforced; Aladdin name stamped in red  
7/8" ID x 1 1/8" OD, 6-6 1/2" L

**Fits Burners:** 1-8

**Replacement:** No longer available; use wick **N198** and remove the paper and tabs



Wick carrier teeth holds wick in place

### Wick Carrier/Raiser

-Mounts into burner bottom  
2 1/8" L x 1 3/16" OD, 2" L gear arm w/ fine teeth on right

**Fits Burners:** 3-6

**Replacement:** No longer available

### 1" Wick Cleaner (Trimmer)

-Did not originally come with a cleaner

**Replacement:** R111 works for all 1" Aladdin Wicks

### Crownplace Brands

13110 Emerson Rd

Apple Creek, OH 44606

Phone: (888) 332-5534

Fax: (815) 572-8518

Website: [www.aladdinlamps.com](http://www.aladdinlamps.com)

Email: [info@crownplacebrands.com](mailto:info@crownplacebrands.com)



### Simply Brilliant™

"Light where you want it –  
When you want it –  
Without the need for electricity."

That's the magic of Aladdin!