

Note: these instructions are written with Model B as the example, but should work for any model that has a wick raiser shaped with a round bottom, 2 long arms, and a shorter gear arm (below, left). Models 8 and 9 had a couple different styles of wick raiser, including one similar to 10-12 and B and also with an additional wick carrier. Burners using the wick carrier will insert the wick from the top and the wick raiser shown below, right, is inserted from the bottom up according to the instructions below.

1. Remove Old Wick

- a. Twist and remove the gallery
- b. Twist and remove the outer wick tube
- c. Turn the wick raiser knob to raise the wick up until you can easily reach the top of the wick raiser arms
- d. Carefully pry the wick raiser arms away from wick, while gently turning the wick to disengage it from the wick raiser; it may help to pull up on the top of the wick to get the buttons out of the line of the holes in the wick raiser
- e. Once free, turn the wick raiser knob to lower the wick raiser until you feel/hear it disengage from the gear, then carefully pull it free from the bottom
- f. Pull the wick from the top of the burner and remove it
- g. Replace flame spreader in inner wick tube, if removed



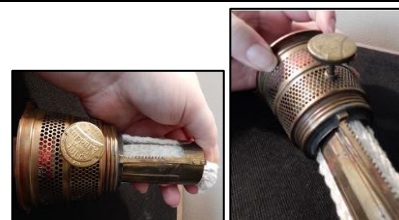
2. Insert Wick

- a. Hold burner basket with one hand and wick in the other
- b. Holding the burner upright, insert the end of one wick tail into one of the wick channel slots located on either side of the inner wick tube
- c. Slide the wick tail by pressing against the inner wick tube until it can be pulled through from the bottom
 - Tip:** a long, slender tool such as a letter opener can help poke and guide the wick to the bottom to reach the slots
 - Tip:** sliding an Index card next to the wick can help keep the wick from getting caught on the winder gear
- d. Repeat b and c for the second wick tail on the other side
- e. Pull wick tails down from the bottom until the round part of the wick is resting around the inner wick tube
 - Tip:** Tweezers are extremely helpful to help grab the paper tabs or the wick itself (if the tabs are missing) to pull the wick through the slots



3. Insert Wick Raiser

- a. With the arms facing the bottom of the burner, insert both wick tails into the round opening of the wick raiser so that it completely surrounds both tails
- b. Rotate the wick raiser to line up the toothed gear arm with the small hole just below the wick raiser knob
- c. Insert the gear arm into the small hole, and feed the other two arms carefully into the wick channels against the sides of the wick



4. Engage the Wick Raiser Knob Gear with the Wick Raiser

- a. Pull both wick tails down slightly while pushing the wick raiser up; you should feel/hear the wick raiser knob gear engage with the arm of the wick raiser
- b. Try turning the knob to see if the wick raiser moves up – if it does, wind it up as far as it will go; if it doesn't try pushing up again on the bottom of the wick raiser with a little bit of wiggling
- c. When the wick raiser arms are high enough, line up the metal buttons on the wick with the holes in the wick raiser arms; you may need to twist the wick slightly left/right or up/down to get the arms over the buttons and then pinch the wick raiser arms against the wick to snap them in place
- d. Turn the wick raiser knob to see that the wick/wick raiser now move as one unit



5. Prep for Lighting

- a. Remove paper tabs from bottom of wick (if present)
- b. Replace outer wick tube and gallery
- c. Soak new wick for 1 hour before lighting